

Stepped-up support system in Finland

How it is implemented in Oulu Hospital School



By Merja Laakkonen, Mirka Manninen and Satu Nevala

Finnish Education – Equal Opportunities for All

http://www.minedu.fi/opencms/export/video/finEDUs_mall.mp4

Stepped-up support system in Finland

Pedagogical assessment



Pedagogical statement



Common support	Intensified support	Special support
Differentiating Remedial teaching Part-time special needs education Councelling Multiagency working School assistant Flexible grouping Co-teaching After school clubs Co-operating with parents	Quantitative and qualitative increase of means used in common support Regular part-time special needs education Small group teaching	Increase of means used in common and intensified support Special groups in mainstream schools Special schools
	Learning plan	Individual education plan

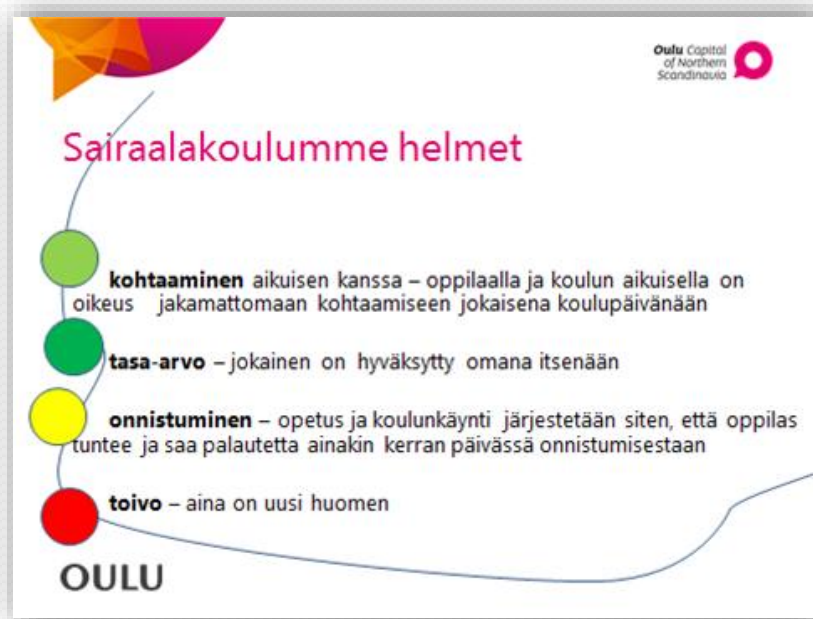


Stepped-up support in Oulu Hospital School

- Support provided for hospitalized children is always intensified or special support.
- Teaching is student focused, individualized and adjustable.
- Communal, social and experiential methods of learning are used in collaboration with the hospital wards.

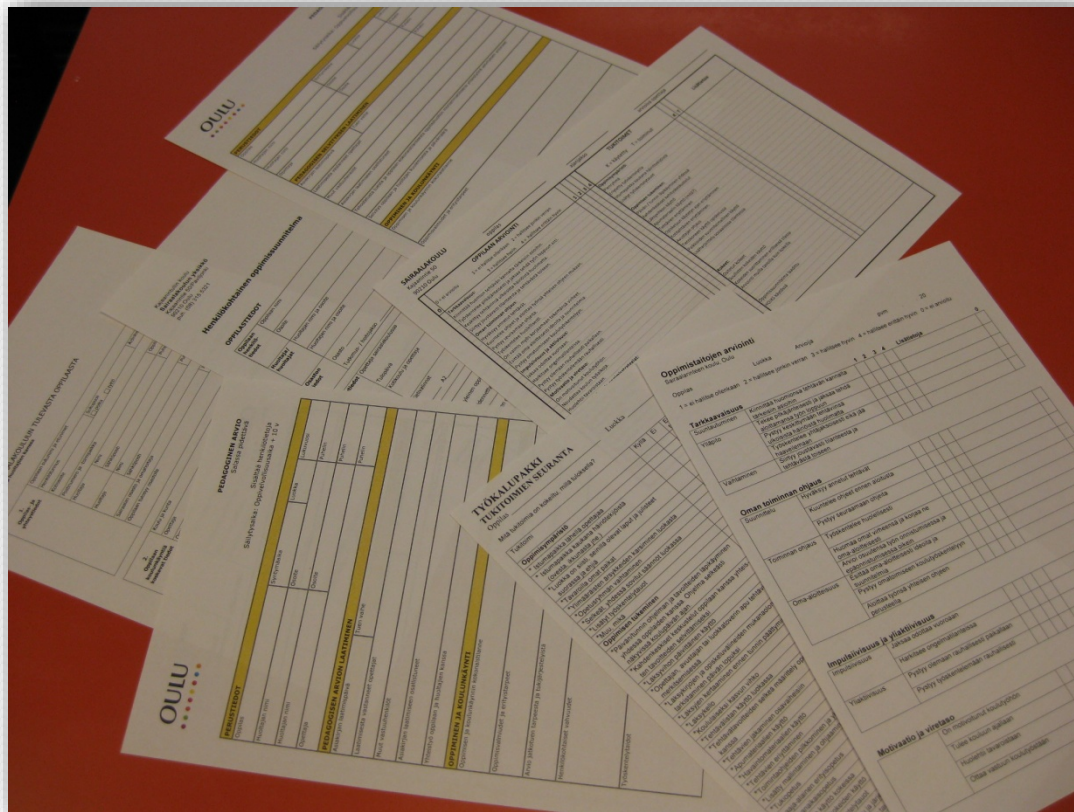


Hospital School Pearls

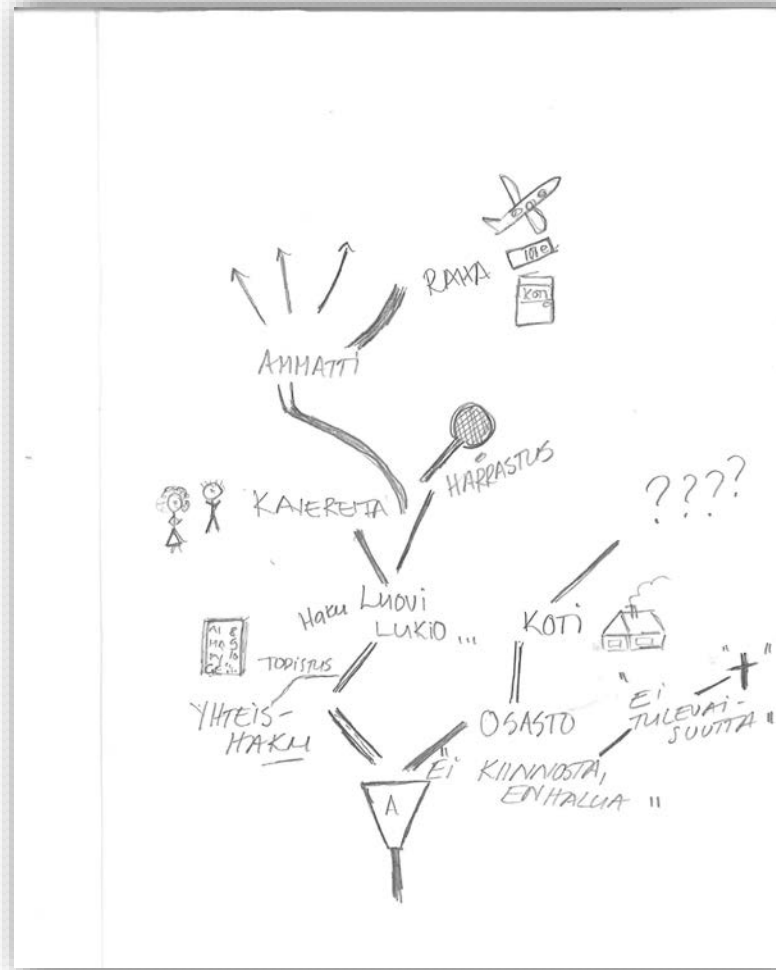


- **Encounter** – each pupil has the right to a personal encounter with an adult on every schoolday
- **Equality** – everyone is accepted as they are/themselves
- **Succeeding** – teaching is arranged in such way that each pupil will succeed and get positive feedback daily
- **Hope** – there is always a new tomorrow

Papers, papers



The road



Smiley face

